


Finding journal articles and using Article Finder


The Library subscribes to over 10,000 printed journals and periodicals and to over 15,000 electronic journals and periodicals. If you are a member of LSE you can use electronic journals from networked PCs on campus as well as remotely. Please see our Password information page for details <http://www.lse.ac.uk/library/passwords/passwords.htm>.

To find journal articles, there are several tools you can use:

- **Electronic Library** – search for articles by topic or subject using databases in the Electronic Library and link to full text using **Article Finder** 
 - **Library Catalogue** – search for all printed and electronic journals provided by the Library
 - **Journals** – look through your favourite electronic journals and go to e-journal publisher websites
- These tools are available via the Electronic resources page on the Library website and as links from the Library Catalogue, Electronic Library and Journals page

Searching for articles by subject or topic - Electronic Library

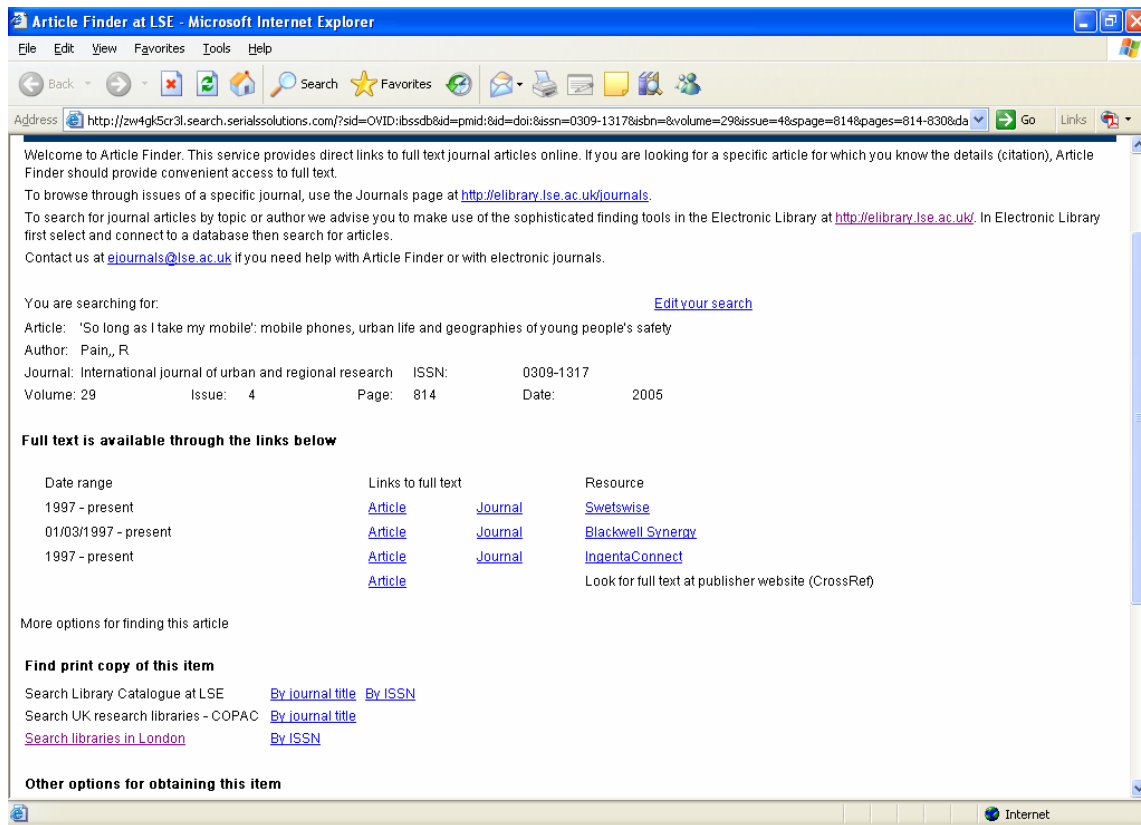
The Library subscribes to databases which you can use to search for articles by title keyword or by special subject keywords.

- If you know the database you want to use, type the database name in the search box
 - To find databases in your subject look for these by clicking the plus sign  next to Subject Lists of Electronic Resources. Go to Find Articles and Books in *Your Subject* to locate and use databases
 - Or search for databases and indexes by searching for the word 'indexes' and adding a subject discipline or general topic, eg 'indexes economics'
- For more information about using the Electronic Library please see the guide *Using the Electronic Library*. Library staff at the Information Desk (first floor) can advise about the best databases to use for your subject.

Linking to full text articles in databases

Wherever you see the Article Finder icon  in your database search results, you can click to see if full text is available. A new screen will appear, offering you a number of choices:

- Links to full text of the article if available
- The option to search the Library Catalogue for a print copy of the journal
- Search other library catalogues for print copies of the journal
- Details of the Library's interlending service
- A link back to the Journals page, so you can continue your search



Finding journals by title – Library Catalogue

1. If you are looking for a specific journal and you are not sure whether the Library provides it in print or in electronic form, try searching the Library Catalogue.
2. Type the name of the journal in the **Find this** search box.
3. If wished, select Journal Title Browse from the **Find Results in:** drop down box and press Search.

➤ Hint: Journal articles are not listed in the Library Catalogue, only Journal titles

Looking though electronic journals by title to find journal articles - Journals

1. If you are not sure of the precise details of the article you need or you simply want to look through issues of a journal in your subject area, go to the Library's Journals web page.
2. You can search by journal title or look through an alphabetical list of journals.
3. You will be able to look through different issues of the journal and to view the full text of articles.

➤ For more information about finding electronic and printed journals, see our guide *Using the Journals Page* or the Finding material section on the Library website: <http://www.lse.ac.uk/library/findinghelp/findinghelp.htm>

This guide is also available on our website. To enquire about availability in other formats, tel 020 7955 7609 or email library.disability.assistance@lse.ac.uk